



A chapter of National Assistance League®

Assistance League® of Indianapolis Community Newsletter

(with Annual Report for Fiscal Year Ended May 31, 2023)



Transforming Lives - Strengthening Community

2023-2024 Governing Board

Executive Committee

President - Cathy Weimer
President@ALindy.org

President-Elect - Carol Valentine
PresidentElect@ALindy.org

V.P. Philanthropic Programs - Deborah Myers
Philanthropic@ALindy.org

V.P. Membership - Janine Bercovitz
Membership@ALindy.org

V.P. Resource Development -
Karen Snider
Fundraising@ALindy.org

V.P. Marketing - Julie Yates
Marketing@ALindy.org

V.P. Education - Margaret Lawrence
Education@ALindy.org

Secretary - Kathy Kinzel
Secretary@ALindy.org

Treasurer - Susie Hacker
Treasurer@ALindy.org

Elected Standing Committee Chairmen

Chairman of Grants - Cathy Camp
Grants@ALindy.org

Chairman School Bell® -
Kathy Detzler
Schoolbell@ALindy.org

Chairman of Strategic Planning -
Trish Sevens
Strategicplanning@ALindy.org

Parliamentarian - Karen Morse

Advisory Council

Legal - Kathleen Hart
Riley Bennett & Egloff, LLP

Marketing/ PR Communications - Amber Pirtle
Creative Services Manager, AECOM Hunt

Real Estate - Jack Hogan
Retired real estate executive

Insurance/ Financial - Patrick O'Connor
Retired Insurance Executive

Social Media - Ann Marie Shambaugh
"Current in Carmel" Managing Editor



Assistance League® of Indianapolis Hosts Regional Conference

Assistance League of Indianapolis hosted a successful Regional Networking Conference on Monday, October 2nd and Tuesday, October 3rd. The theme of the well-attended gathering was "Connecting at the Crossroads of America." The conference was sponsored by Healthcare Initiatives, Inc. and Patterson Dental.

Participants came from the national office and the chapters of Birmingham, Chicagoland West, Cincinnati, Kansas City, Metro Columbus, Mid Missouri, Minneapolis/St. Paul, Nashville, Southeastern Michigan, St. Louis, Triangle Area, Wichita, and Indianapolis.



Regional Conference Chairmen,
Susan Kwiatkowski and Trish Sevens

Some of the topics presented included "Approachable DEI," "Bringing Chapter By-Laws into Compliance with State Laws for Non-Profit Organizations," "Expanding Your Fundraising Capabilities", "Membership-Making the Most of our Greatest Resource," "Member Enrichment: The Value of Educational Moments at Regular Meetings," "The Power of Marketing and Media for Non-Profits," "Leadership Development: Barriers and Strategies," "Roundtable Networking Discussion: Literacy and Scholarship Programs," and the keynote presentation "Connecting to Purpose and Building Belonging."

The members of Assistance League of Indianapolis sincerely welcomed the chance to show guests some famous "Hoosier Hospitality." It is hoped that what was learned and the connections that were made will help regional chapters grow and enable them to continue to serve their communities. Attendees are looking forward to another networking conference in the future.

Operation School Bell®...Empowering Children to Succeed

Apparel

School personnel from Indianapolis Public Schools and the Metropolitan School Districts of Lawrence, Pike, Warren, and Washington Townships identify and refer the Pre-K through Grade 5 students served by this division. Families complete a sizing form which they return to our leadership team via school personnel. Each child receives a duffel bag, winter coat, hat, gloves, six pairs of socks and underwear, two polo shirts, two navy or khaki pants or skorts and a toothbrush. For the 2023-24 school year, the Apparel division provided clothing for 3,019 IPS and Township students. Besides meeting fundamental needs, these items raise students' self-esteem, enabling them to be more successful in the classroom.



Shoes

New athletic shoes are provided to students referred to us by metropolitan Indianapolis school personnel through a partnership with a local shoe retailer. Each school in the five corporations served submits a roster of students and their shoe sizes. Thanks to designated funds from member donors, four of the school corporations were provided with shoe measuring devices for the first time instead of using the tracing process. The fifth corporation was able to purchase these devices on their own. Pick-ups and deliveries are organized by the operations departments of the participating school corporations. For the first semester of the 2023-24 school year, 1,913 pairs of shoes were distributed. Our goal is 2,000 pairs; the remaining allotment will be offered to select schools second semester.

Beyond the Bell

The goal of Beyond the Bell is to supply new school clothing to students with emergency needs. These students may be homeless, displaced, new to their schools, or unable to obtain school clothes for any reason. Beyond the Bell provides an inventory of uniform pants and shirts, underwear and socks. In 2023-24, the tenth year of the Beyond the Bell division, 34 IPS elementary schools, nine Pike Township schools and eight Washington Township schools received 156 Beyond the Bell bags containing a variety of clothing sizes.

Assault Survivor Kits®...Restoring Hope and Dignity

The Assault Survivor Kits® program works year-round to provide new clothing for victims of assault, rape, or domestic violence. Clothing is purchased, then kits are assembled. Each kit contains a shirt, a pair of sweatpants, socks, and underwear. Member volunteers then distribute kits and extra undergarments to area hospitals, shelters, and other treatment centers as needed. During the 2022-23 fiscal year, we worked with and supplied kits to 19 agencies in the Indianapolis area. Volunteers were able to deliver 687 kits and 834 additional undergarments to our agencies.

ALI Bears...Providing Comfort through Hugs

Teddy bears provided by the ALI Bears program bring comfort to children in hospitals, hospice patients, and children and adults grieving a loss. In 2022-23 Assistance League members delivered 954 bears to nine local agencies including hospitals, hospices, and family service centers. Assistance League member volunteers dress the bears in an Assistance League t-shirt and attach a note that says, "Hug your bear today."



ALI Friends...Offering Friendship and Cheer

ALI Friends is a philanthropic program that focuses on bringing joy and companionship to seniors and others with health issues. The second Thursday of each month we serve dessert, play Bingo, and celebrate birthdays at Joy's House, an Adult Day Care Facility in Broad Ripple. We do the same activities on the third Thursday of the month at North Capitol Health Care and Rehabilitation Center. We are very thankful that the worst of the COVID pandemic has passed and we are able to share friendship with our senior adults.

Pilot Literacy Program

Assistance League® of Indianapolis is in the final phase of a pilot program called Reading Buddies that was initiated in February 2023. In conjunction with our goal of improving educational outcomes in our community schools, Assistance League has partnered with MSD Washington Township to provide literacy experiences for first grade students. In an effort to improve childhood literacy, our volunteers visit classrooms weekly for six weeks each semester to promote a love of reading through sharing books and reading experiences. At the conclusion of the read-aloud experiences, Reading Buddies return to the classrooms to give students their choice of new age-appropriate books to take home and share with their families. This gift results in increasing the overall number of books in the children's homes which research indicates also enhances literacy outcomes.



2024 Action!Week

Action Week will take place on February 15 for Kindergarten and first grade classes at IPS School 109. Volunteers will present a puppet show called "Eddie and the Magic Buttons" and donate books to the school library. Thanks to a generous donation, each student will take home a new book. Literacy is crucial to success in school, and we hope our presentation encourages children to think of reading as fun and important.



Thank you to member Laurel Burns for creating Eddie the Dog.

The President's Message

Dear Friends,

As President of Assistance League® of Indianapolis, I am honored to share with you our 2022-2023 Annual Report. While we have settled into a time that seems more normal following the COVID pandemic, we continuously strive to meet the ever-growing needs in our community through our philanthropic programs. With a base of nearly 200 all-volunteer members, we are dedicated to our commitment of transforming lives and strengthening community. We continue to evaluate current needs and find ways to meet them while using the resources provided by the generosity of our grantors and donors. Every contribution, no matter how small, enables our organization to continue our mission through our philanthropic programs: Operation School Bell® - Apparel, Shoes, and Beyond the Bell; Assault Survivor Kits® ; ALI Bears and ALI Friends.

In the Fall of 2023, Operation School Bell provided over 3,000 students with apparel through our pack and deliver process, 1,900 students with athletic shoes, and countless students with "incidental" clothing and hygiene necessities required to be present in class with a feeling of dignity through Beyond the Bell. Our Northbrook Distribution Center, the warehouse we rent to receive and process clothing requests, allows us to provide these essential daily needs to economically challenged students throughout the Indianapolis area. Paying for this distribution center has come at a cost, but we are thankful and determined to be able to continue our mission of providing these basic, essential needs to students.

Your continued support and encouragement is greatly appreciated. On behalf of Assistance League of Indianapolis - thank you!

In gratitude,

Cathy A. Weimer, President
Assistance League of Indianapolis

PLEASE VIEW OUR ADVERTISEMENT IN THE
INDIANAPOLIS BUSINESS JOURNAL
2024 GIVING GUIDE
www.IBJ.COM

Raising awareness and support for Assistance League of Indianapolis



2023 Holiday Luncheon & Style Show

Our “Jingle & Mingle” Holiday Luncheon & Style Show is an annual event that has become a tradition for members of Assistance League and their guests to “ring in” the arrival of the holiday season. Four hundred guests, enjoying each other’s company, supported our programs by dining together, shopping, bidding on silent auction items and enjoying raffles, including Purse-A-Palooza which offered a chance to win a valuable jewelry gift card by choosing the purse they thought might contain it. The Secret Ingredient, Kits and Kaboodle, Zionsville Olive Oil Gallery, Lucybug Hand Crafted Soaps, Olde Tyme Adornments, and Pamela Newell Fine Art were this year’s vendors and offered a great selection of holiday gifts. Modeling fashions from The Secret Ingredient were Assistance League members and a delightful model from CarDon & Associates.

Net proceeds of \$76,000 were raised through sponsorships, generous donations, silent auction sales, vendors’ donations and the sales of vibrant poinsettias and lovely table decorations. Our special thanks to everyone who supported our event. See you in 2024!

AECOM Hunt 14th Annual Charity Golf Outing

The 14th annual AECOM Hunt Charity Golf Outing took place on September 7, 2023 at Eagle Creek Golf Club. The event hosted 188 golfers and raised \$30,310.46 to support the philanthropic programs of Assistance League of Indianapolis. Golfers enjoyed a great day of golf, networking, and fun activities including the Golf Cannon, Wheel Spin, 50/50 raffle, and quality raffle items.

We are grateful to all our donors and sponsors for their generous support over the years. Special thanks to our title sponsor Electric Plus, dinner sponsor Arni’s, and long-time sponsors Repro Graphix, Crown Corr Inc, and Riley, Bennett, Egloff. We appreciate our raffle prize donors, including French Lick Resorts and Woodland Country Club.

We are honored that AECOM Hunt has selected our organization as the charity of choice for this year’s fundraising event. Please mark your calendars for September 5th, 2024.



Spring Fundraiser **SAVE the DATE!**
Thursday, April 18, 2024

MISSION POSSIBLE: 2024



“Step up for those in need” and enjoy an evening of line dancing, dining, bidding on silent auction items, and fun! For more information visit: www.alindy.org/mission-possible

Shop to Earn

On October 12 members and friends enjoyed shopping at Tangerine Cards and Gifts located at Michigan Road and 106th Street. Other members were able to shop online.

We passed out brochures to non-member shoppers and explained our mission. Tangerine donated \$607.85 which was 20% of their total sales from 4:00 to 8:00 pm that evening. We appreciate Tangerine Cards and Gifts and had a wonderful time partnering with them.



Operation School Bell® Mailer

All donations received from our OSB Mailer fundraising campaign directly benefit our Apparel, Shoes, and Beyond the Bell divisions of Operation School Bell. The campaign, which ran from September 1 through December 31, 2023 raised nearly \$64,000! We are so grateful to all our donors who supported this campaign and our efforts to help thousands of children in need in our community!



Flower Sale

Our second Flower Sale held on May 3 was a great success. Jones Nursery in Gadsden provided us with a nice array of annuals. More than ten volunteers worked to sort and organize by species and color 720 plants. Assistance League’s profit for this event was \$4,898.

Financial Statements for Fiscal Year Ended May 31, 2023

Monies realized from our fundraising efforts are returned to Indianapolis and the surrounding areas through our four philanthropic programs. Assistance League of Indianapolis was organized in 1984, chartered in 1988, and has tax-exempt status under section 501(c)(3) of the Internal Revenue Code.

Statement of Financial Position

Assets	2023	2022
Cash & Cash Equivalents	\$ 736,337	\$ 1,000,455
Grants Receivable	\$ 40,000	\$ 8,000
Inventories	\$ 216,619	\$ 203,881
Investments	\$ 561,116	\$ 229,390
Other Assets	\$ 7,976	\$ 3,224
Total Assets	\$ 1,843,762	\$ 1,444,950
Liabilities and Net Assets		
Total Liabilities	\$ 308,475	\$ 37,517
Total Net Assets	\$ 1,535,287	\$ 1,407,433
Total Liabilities & Net Assets	\$ 1,843,762	\$ 1,444,950

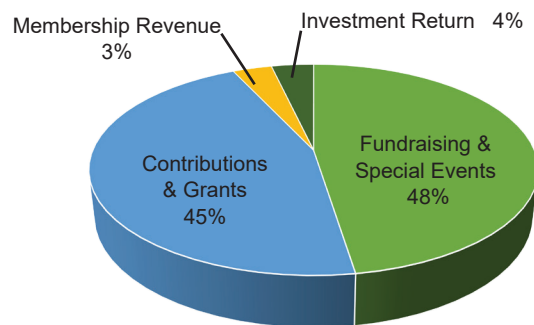
Assistance League of Indianapolis is a chapter of National Assistance League®. We have no salaried staff or paid employees, and the Board of Directors is a member-elected working Board. For the year June 1, 2022 through May 31, 2023, volunteers devoted 22,259 hours with an estimated value of **\$707,852***.

(*This value was computed based on the US Department of Labor Statistics.)

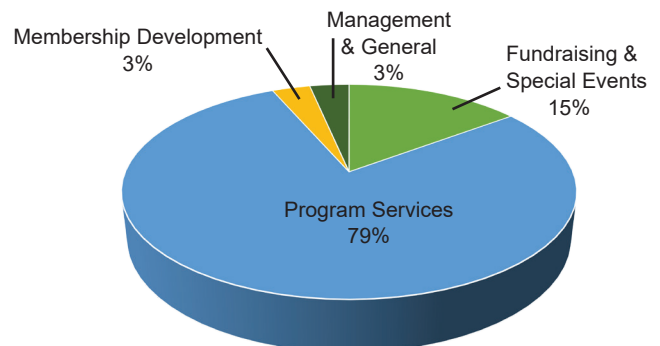
Statement of Activities

Revenue	2023	2022
Fundraising & Special Events	\$ 302,149	\$ 252,451
Contributions & Grants	\$ 289,328	\$ 236,781
Membership Revenue	\$ 21,335	\$ 16,344
Investment Return	\$ 23,062	\$ 0
Total Revenue	\$ 635,874	\$ 505,576
Expenses		
Program Services		
Operation School Bell®	\$ 376,044	\$ 292,535
Assault Survivor Kits®	\$ 13,346	\$ 13,497
Other Programs	\$ 9,856	\$ 8,661
Total Program Services	\$ 399,246	\$ 314,693
Supporting Services		
Management & General	\$ 16,943	\$ 15,693
Membership Development	\$ 16,340	\$ 11,836
Fundraising & Special Events	\$ 75,491	\$ 78,123
Total Supporting Services	\$ 108,774	\$ 105,652
Total Expenses	\$ 508,020	\$ 420,345
Change in Net Assets	\$ 124,777	\$ 85,231
Net Assets - Beginning of year	\$ 1,407,433	\$ 1,322,202
Net Assets - End of year	\$ 1,535,287	\$ 1,407,433

2022-23 Revenue - \$635,874



2022-23 Expenses - \$508,020



MISSION STATEMENT

Assistance League volunteers transforming lives of children and adults through community programs.

VISION STATEMENT

Essential needs are met in our community and families flourish.

DIVERSITY, EQUITY, INCLUSION AND BELONGING STATEMENT

Assistance League of Indianapolis strives to listen, learn, respect and engage with our member volunteers, community partners, and program recipients to create a culture where all experience a sense of belonging and inclusion in a just and equitable environment.

NON-DISCRIMINATION STATEMENT

Assistance League of Indianapolis welcomes all who share the commitment to volunteerism regardless of gender, sexual orientation, family situation, race, religion, ethnicity, economic status, physical ability, or other diverse circumstances.

Transforming Lives - Strengthening Community...thanks to our Donors

A heartfelt thank you to all of our generous donors who supported Assistance League® of Indianapolis from June 1, 2022 through May 31, 2023. The following list recognizes both financial and in-kind donations and may include designated funds through United Way write-ins. We have made every effort to ensure the accuracy of this list, so please accept our sincere apologies if your name is not included, is in an incorrect category or has been misspelled. If you would like your name removed from our mailing list or have any other corrections, please contact Assistance League of Indianapolis at: President@ALindy.org

Businesses, Foundations & Organizations

Platinum (\$20,000+)

AECOM Hunt
MCR Charitable Foundation, Inc.
Nina Mason Pulliam Charitable Trust
The Clowes Fund

Gold (\$10,000 - 19,999)

Concerts for a Cause
Giordano Family Charitable Fund
Saverns Family Charitable Fund
The Brave Heart Foundation
The Shaw-Burckhardt-Brenner Foundation, Inc.

Silver (\$5,000 - 9,999)

Anonymous
Corteva Agriscience
Landa Foundation, Inc.
Mary J. Proctor Foundation
Sertoma Club of Broad Ripple

Bronze (\$1,000 - 4,999)

AES Indiana
Arni's Restaurant
Ben Hur Construction Company
Brighton Foundation Trust
CarDon & Associates, Inc.
CE Solutions, Inc.
Corvette Indy, Inc
Covert Family Foundation
Crown Corr
Downtown Optimist Foundation
E. F. Marburger Fine Flooring
Electric Plus, Inc.

Meijer
Oak Family Foundation,
a Fund of CICF
Presbyterian Women of Second
Presbyterian Church
Repro Graphix, Inc.
Riley Bennett & Egloff, LLP
Rotary Club of Carmel Indiana
Service Plus Heating,
Cooling & Plumbing
Shrewsbury & Associates, LLC
TESCO, LLC
The Jenn Foundation
The National Bank of
Indianapolis
The Toomer Family Foundation
United Way of Central Indiana
W&W/AFCO Steel

Supporter (\$500 - \$999)

American Structurepoint
Brown County Music Center
COE Commercial Office
Environments
Eaton Corporation
ERMCO, Inc.
Five Star Dance Studios
Fink, Roberts & Petrie, Inc.
Gieger & Peters, Inc.
Holiday Farms Golf Club
Indy Towing Service, Inc.
Interior Specialties, Inc.
Irving Materials Incorporated
Kroger

Mark Holeman, Inc.
MSD of Warren Township
MSD of Washington Township
Network for Good
New Era Technology
North Mechanical Contracting
Patriot Engineering
Sigma Theta Tau International
The Benevity Community
Impact Fund
The Club at Crosspoint
The Secret Ingredient
Ultimate Apparel, Inc.
United Methodist Women
St. Luke's United Methodist
Weddle Brothers Building
Group
Wurster Construction
Zurbuch Consulting

Friends (Up to \$499)

Another Broken Egg Cafe
Arsee Engineers, Inc.
B & B Contracting
Bath Junkie
Beef & Boards Dinner Theatre
Bo-Mar Industries, Inc.
Candle and Cole
Charleston Restaurant
Convivio
CSO Architects, Inc.
Day Furs
Emporium Hair Salon
Envelop Group

F. E. Moran Fireprotection
Gibraltar Construction Corporation
Joseph Fortunato, DC, LAC
Hare Chevrolet
Harmon Construction, Inc,
Indiana Pacers
Jobsite Supply
Kendra Scott LLC
Kits and Kaboodle
Lilly Endowment, Inc.
Lloyd George and
Karen Query Trust
Loftus Engineering
Michael Andretti Foundation
Moyer Fine Jewelers
Brian Giangjordano
Perennials Plus
Ray's Trash Service
Renaissance Charitable Foundation
Rusty Bucket
Ryan Fireprotection, Inc.
Salesforce
Salon Trilogy
Schneider Electric
Sharp Printing
Sullivan's Steakhouse
Superior Touch Cleaning
Taxman Brewing
The Randall C. and Janet D. Belden
Family Fund
Traders Point Caring Carriage
Vocational Alternatives, Inc.
Zionsville Olive Oil

Look for us in the *Sophisticated Giving Charity Register 2023* (giving@slmag.net)

Platinum (\$20,000+)

Nancy Farris
Miss Ann Galvin

Leslie and David Morgan
Deb and Mike Myers
Dr. and Mrs. D. Wendell Osborne

Jeff and Terri Holley
Jane and Scott Hoover
Lynne and John Hurlbut

Lalanne Barber
Priscilla Bardach
Karen Barich
Pam Baxter

Molly Cordes
Mr. and Mrs. William Corley
Mr. and Mrs. James Covert
Marla E. Craig

Gold (\$10,000 - 19,999)

Mr. and Mrs. Lacy M. Johnson
Larry and Sandra Speer
John and Judy Tomke
Barbara and Tom Zurek

Mr. and Mrs. Scott Potterack
Conrad Pytel
Mary and Bill Reid
Jenny and Charles Schalliol

Mary Itamura
Mrs. Sue Ann Kalleres
Shelly and Clif Knight
Harriett Majors
Claire Marshall

Catharine Bayse
Ann Beale
Marcia Beckwith
Janice Beitzel

Amy Crell
Spring Crews
Charleen Cross
Betty Crossland

Silver (\$5,000 - 9,999)

Lori Covert
Bill and Susie Moore
Dr. Stephen and Connie Pollom
Vickie and Jim Theis

Mr. and Mrs. John Shankel
Tim and Dobbie Smith
John and Laura Smitson
Mr. and Mrs. Blair Snead

Taylor and Margi Miller-Simmons
Laura and Glenn Moehling
Ron and Karen Morse
Pat and Jane Nash

Suzanne S. Bellamy
Carla and Donald Bennett
Mary Bennett
Elizabeth Berlin

Ms. Brenda Culpepper
Ms. Leota Cutler
Alexis Jenkins
Catherine Daugherty

Bronze (\$1,000 - 4,999)

Tish and Gregg Barth
Mrs. Linda Bayne
Pam and Steve Benz
Janine and Alan Bercovitz
Cecelia Burns
Patty and Ken Burow
Dr. and Mrs. William B. Carr

Miriam and Don Taylor
Betty Tomeo
Sherri and Ed Torres
Elena Goss and Bob Valentine

Greg Henneke and
Martha O'Connor
Mr. and Mrs. James Phillips
Frank and Charlotte Pichler

Ms. Ellen Bernstein
Ruth Bleeker
Lynn and Brian Boak
Carrie and Dave Boer

Kelley Davidson
Marcia Davidson
Alan Davis
Linda Davis
Ellen and Christopher Dean

Mrs. Christy Corey
Patrick and Rosemary Crowley

Carol and John Valentine
William and Emily Ward
Matt and Cathy Weimer
Marcia and Bill Wiedelman
Dina Woodard
Kathy Kerr and Bruce Wylam

Elvin and Lisa Plank
Mrs. Dorian Poole
Ms. Judith Roudebush
Suzanne Scher
Mr. and Mrs. William Schmidt
Susan and Jim Seet

Debbie Bojrab
Mark and Celia Booher
Sheila Bosron
Julie Bowen
Kathy Bradfield
Bruce and Karen Brantingham

Rick DeJean
Barbara Delong
Joan DeVeau
Barbara and Gordon Diehl
Kathryn Diener
DiAnn Donahue

Nancy and Mike Curless
Luanne and Don DeVries

Supporters (\$500 - 999)
Judith N. Aikman
Cathy Anderson
Ruth Ann and Lawrence Arany

May Shearon
Karen Snider
Amy Spudic
Rosie Spurgin
Libby Stickle

Loretta and Craig Broeking
Mary Ann Brookshire
Charles Brown
Marthe Browne

Mrs. Annette Donegan
Carole Dorsch
Jeff and Vicki Drake
Kathy Drewes

Rick and Kelli Ellison
Carol and Keith Gambrel

Andrea and Rick Arbore
James and Angela Bagnoli
Ms. Judy Barnes

Linda and James Trippi
Dolores J. Urban

Mr. Bob Browning
Mrs. Sally Bruggemann

Conni Dunn
Joyce Dunseath

Sharon and Kevin Gleason
Dina Graham

Terry and Robert Bowen
Victoria Broadie

Lisa and Tom Valentine
Spencer Vawter

Jennifer and Richard Buchanna
John Buckner

Jennifer Dwyer
Shannon Earl

Judy and Dave Haas
Tom and Susie Hacker

Sonnie L. Burger
Alissa Carmichael

Greg and Betsy Wallis
Kim Wettersten

Leslie and Jonathon Buckner
Sharon Bunch

Anne Eaton
Pam Edgington

Kathleen and Gary Hart
Ms. Lynn Jackson

Mr. and Mrs. Burl Carmichael
Chris Coffey

Kathy Whitson
Laura and Brian Williams

Anne Burdette
Dan and Diane Burke

Cynthia Eiteljorg
Karen and Bill Elliott

Richard Jardine
Elly and Dave Johnston

Janet Cordes
Jo and Randy Craig

Steve and Jacqui Wylam

Laurel Burns
Alex and Andrea Burow

Bernard Emkes
Mr. and Mrs. Jerry Erskine

Mandy and Michael Kerr
Sally Kerr

Marsha Craney
Mary Lou Curless

Friends (Up to \$499)
Mr. and Mrs. Steve Abbott

Ann Hyer Buttrey
Shirley Calhoun

Judy and Thomas Ertl
Diane Farlow

Kathleen Kinzel
Barbara and Bill Kulsrud

Barbara A. de Gortari
Ms. Alice Detzler

Bill Adams
Nayab Ahmed

Cathy Camp
Ms. Val Campbell

Kathleen Farrar
Lindsay Fernandez

Susan and Stan Kwiatkowski
Sue and Martin Lammers III

Kathy and Donn Detzler
Ms. Patricia Deyhle

Helen Alexander
Asif Ansari

Barbara Canaday
Ms. Carol Cashman

Sandy Fink
Bruce Flater

Ms. Alma Lathrop
Mr. and Mrs. Arnie Macy

Mrs. Kathy Drew
Mr. and Mrs. Richard Ellery

John Austgen
Peter Austgen

Mary and Mike Chapman
Sherry and Ray Chester

Paul and Nancy Fleming
Ann and David Frick

Susie Main
Kelli McLaughlin

Alan and Carole Erickson
Mr. and Mrs. Antonio Galindez

Karen Ayres
Colleen Baillie

Julie Clark
Kim Clark

Kay Nelson Gable
Kathy Galat

Melissa Meeks
Amy and Andrew Michie

Dave and Jan Galloway
Ms. Barbara Goodwin

John Baker
Katie and Robert Baker

Joan Close
Amanda Congrove

Ms. Annette Gambill
Mona Gandhi

Mrs. Jennifer Miller
Sally Mills

Mary Gosling
Barbara and Bill Hammer

Nancy and Michael Baldwin
Marilyn Banks

Mr. Andrew Cooper
Janie Cooper

Jolee Garis
Wayne and Ilene Garrett

Barbara and Peter Mohr
Dayton and Trudy Molendorp

Nick and Diana Hein

Allison Barber

Sarah Copeland

Carol and Roger Gastineau

John and Cheri Gerdt	Suzanne Irwin	Kate Marvel and Cornelius Martin	Terri and Rick Ransdell	Stephanie Street
Ms. Phylis Gesellchen	Donna Jacobi	Ms. Rose Mays	Mary Redman	Sarah Stuerzenberger
Joyce Gifford	Kirk, Jean, Jerry, Linda Jacquay	Cindy McCarthy	Jennifer Redmon	Linda and David Swanson
Sandra Ginder	Cody Johnson	Russ and Tish McFarren	Mr. and Mrs. David Reed	Christine Taht
Betsy and James Giordano	Juana Johnson	Patty and Kevin McGoff	Mr. and Mrs. William Riggs	Jill and Joe Tanner
Mark Gleason	Amy Johnston	Judy McGroarty	Marilyn Ringer	Rose Tappella
Jan Good	Joanne Jones and Daniel Neath	Ms. Katie McKinney	Charlotte Robertson	Mark Tasch
Brenda Goodrich	Mr. and Mrs. William C. Jones	Greg and Cindy McLochlin	Nancy Rollo	Mrs. Karen Marie Taylor
Nancy N. Gootee	Carol Joyce	Pam McNealy Powell	Gary Romesser	Steve and Stephanie Tebbe
Meg Gorman	Mr. Ed Kalinowski	Ms. Delores McRoberts	Susie and John Ross	Dr. and Mrs. Morgan Tharp
Jane Gosling	Cheryl Keeler	Ms. Elizabeth Meeks	Katherine Rossetter	John and Kathy Theis
Ms. Sandra Gosling	Gloria Kellogg	Mary and Russell Melton	Mary Jane Roth	Michelle Theis and Dave Moore
Peggy Gould	Mary Kemper	Mr. and Mrs. Stan Miles	Steven and Nancy Roth	Mr. John Thomas
Andrew Graham	Josephine Kerr	Jane Miller	Jack Rubush	Barbara and Gary Thrapp
Jacquelin Graham	Abigail and Jack Kienzler	Lindsay Miller	Laura and Rick Sanfrey	Mr. and Mrs. S.E. Tracey
Ellen Griest	Ann and Joe Kiley	Jeanne and Robert Milligan	Catherine Scheidler	Barbara Turner
Susan and Eric Groen	Gayle Kimmell	Sharon Mishkin	Barbara and Roger Schmenner	Bevely Vail
Mary Ann and John Grogan	Kay Kinder	Barbara R. Mitchell	Judith and Martin Schmidt	Pamela Van Bruaene
Linda Groogan	Ann Kinney	Ms. Dawn Moloney	Monica and Jack Schneider	Chris Varnau
Mrs. Janet Guest	Laura Klinestiver	Donna Moore	Mary Schuman	Mary Ann and Ron Wallace
Stina and Vic Gutierrez	Jamie Kniffen	Elizabeth Moore	Cathy Seibert	Joanne Wallis
Candy and Phil Hagen	Susanne Komenda-Myers	Ms. Nancy Moran	Elizabeth Seno	Vickie Wann
Andrea and Paul Halverson	Ms. Joy Kostoff	Edwin Morris	Paul Sevigny	Susan Watson
Jo Ellen and Steve Ham	Jennifer Lacey	Jennifer Mrzlack	Brenda Shaheed	Rosalind Webb
Candice and Craig Hammond	John Lacheta	Deloris Muller	Tina Shambo	Mr. and Mrs. Bob Wehling
Candace Harcourt	Kaye LaCroix	Cindy Munerol	Linda Sharpe	Rosemary West
August Hardee II	Mrs. Patty Langevin	Christopher and Lisa Murphy	Julie Sheldon	Norma Wheeler
Mr. and Mrs. Duke Hardy	Rachel Lanus	Joan Nicolet	Robert Shelton	Ms. Suzi White
Drs. Steven and Terri Harris	Nikki LaPolt	Susan and Don Noeller	Sheila and Steve Shepard	Ken and Karen Wichman
Drs. John and Barbara Hassell	Connie Lathrop	Sandy Obremsky	Sheryl Shepherd	Rita Wiley
Pamela Hatcher	Mr. and Mrs. Kevin Lavelle	Ann O'Connor	Sunny Shuai	Kathy Wilhelm
Mr. and Mrs. Edward Hathaway	Margaret Lawrence	Cynthia and Patrick O'Connor	Connie Sivertson	Betty and Bill Wills
Ms. Tami Brown Havens	Carrie Leiberich	John and Mary Ellen O'Connor	Dana Slama	Joan Wilson
Judith and Hugh Haynes	Kathy Lengerich	Kari O'Connor-Kinzel	Dr. and Mrs. Thomas Slama	Ann Windley
Susan and Bill Hebert	Cynthia Levin	Mr. and Mrs. Charles J O'Drobinak	Andrea Sloan	Dr. and Mrs. Peter Winters
Cheryl Helton	Dawa Lhamo	Pat Oglesby	Mrs. Beth Ann Smith	Dana Witmer
Elizabeth and Mike Heneghan	Kathy Lindsey	Mrs. Susan Orr	Brenda Smith	Mr. and Mrs. Kirk Wolff
Ms. Judy Henn	Sharon Lofton	Tammy Owen	Cindy and Carl Smith	Stacy Worthington
Kay Herber	Shelley Loftus	Dr. Ingrid Ozols and Rob Perdue	Janet Smith	Sharon and William Yager
Donna and Charles Hiland	Susan Long	Mrs. Lynn Palenik	Julie Smith	Shirley Yager
Claudia and J. Mark Hilligos	Joe Loughmiller	David and Janice Pasco	Kevin Smith	Julie Yates
Mr. and Mrs. John Hixon	Ms. Jane Lucas	Mr. and Mrs. Jerry Peterson	Pam Smith	Karen Yeftich
Janet and Richard Hoeping	Mark Lucke	Janet Pfadt	Nancy Snapp	Mr. and Mrs. Daniel Yuska
Ms. Nancy Hoff	Ms. Lisabeth Luther	Keith Phelps	Stephanie Spence	Jody Zeph
Jack Hogan	Alison Macku	Sharon Pierce	Dixie Spiller	Jane Zobel
Janet and Fritz Hohl	Sarah and Jeff Madtson	Suzie Platte	Alison and Bob Spoonmore	Suzanne Zybert
Dana and Susan Holbert	Dave and Tiffany Majors	Katie and Danny Pollom	Francie Staub	Anonymous
Mike Howard	Jim and Joan Mally	Ruth Ponti	Carla Stephens	
Sandi and Roger Hudson	Robin Marks	Mr. and Mrs. John Powell	Ned and Kathy Sterner	
Ruth Huff	Marian Marlowe	Beth and Pat Pritchett	Kim Stickney	
Susan Hughes	Mary Marsh	Linda Privette	Ms. Elizabeth Stiles	
Julie Husselman	Bryan Marshall	Carol Radar	Risa Stockton	
Kathy Ireland	Holyn Marshall	Linda and Bruce Ranger	Sharon and Darrell Street	



Transforming Lives - Strengthening Community

1475 West 86th Street, Suite E
Indianapolis, IN 46260-2185



If you would like information about our philanthropic programs, fundraising efforts or wish to make a donation, please call **317-872-1010** or visit our website: www.ALindy.org
Text **ALINDY** to **77948** to donate fast and securely from your smartphone.



Membership

Assistance League of Indianapolis is comprised of committed, compassionate, collaborative, and generous member volunteers who work together to make this organization remarkable in serving the needs of our community. Despite having just gone through an unprecedented time, we have re-imagined ways to continue our much-needed programs and carry out our mission. Assistance League offers a foundation of support for thousands of adults and children in central Indiana. With 40 years of experience, Assistance League has achieved success in identifying and assessing the needs of the people that we serve and has delivered solutions. Please join us to help transform lives and strengthen our community.

To learn more about membership in Assistance League contact:

Membership@ALindy.org

